

KNIFE SHAFT HOLDING CAP INSTALLATION



Insert shaft



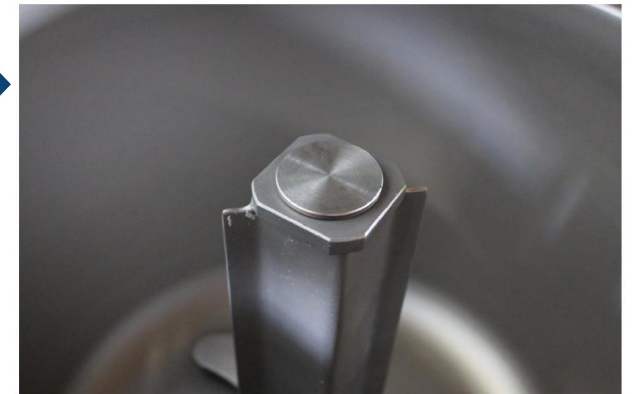
Insert Cap



Twist left



Done!



Our product brands:

FrymaKoruma Stephan Terlet

KNIFE SHAFT HOLDING CAP INSTALLATION



IMPORTANT!

YOU MUST MAKE SURE THAT THERE IS SPACING BETWEEN THE HOLDING CAP AND THE WHITE STOPPER THAT STICKS OUT FROM THE BOTTOM CENTER OF THE LID.

FAILURE TO DO SO WILL RESULT IN DAMAGE TO ONE OR BOTH PARTS.

#6468SS



DOWNLOAD THE APP!
“PROXES USA”

Our product brands:

FrymaKoruma Stephan Terlet